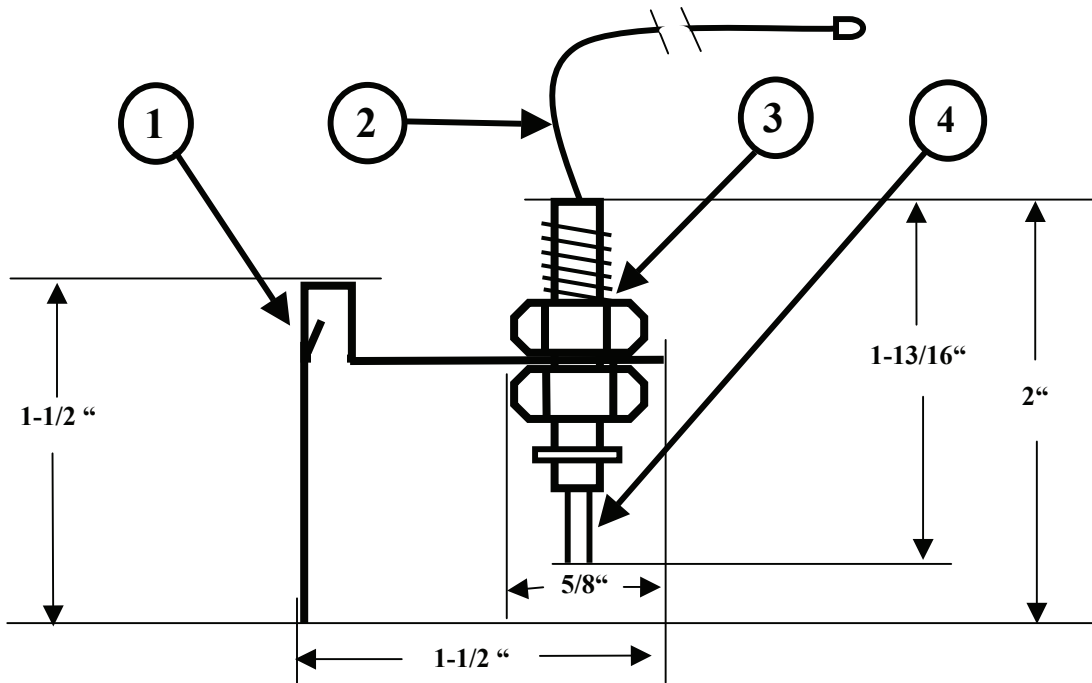


SAFE-T-PROBE® MODEL SP1A



- ① Adjustable Stainless Steel Clip/Bracket
- ② 72"-Inch, 18AWG CMP Plenum Cables w/ Spade Terminals
- ③ Adjustable Depth Water Sensor Assembly
- ④ Copper Sensor Probes

RECTORSEAL
 2601 Spenwick Dr
 Houston, TX 77055
 713-263-8001 - 800-231-3345
 Fax 713-263-7577 - 800-441-0051

PART NAME:
**MODEL SP1A A/C CONDENSATE
 OVERFLOW REMOTE SENSOR**

COMMENTS/REQUIREMENTS:

- ◆ Not a stand alone sensor – must be installed with Model SP1P sensor/switch
- ◆ Minimum pan depth: 1-1/4 inch. Adjusts for deeper pans
- ◆ Sensitivity: 0 to 3/8-inch for 1-1/2" pan depth
- ◆ UL 508, NFPA 90A compliant
- ◆ 3 Amp switching capacity
- ◆ 24 volts A/C Class 2

TOLERANCES: (EXCEPT WHERE NOTED) .XX ± .020 .XXX ± .005 .XXXX ± .0005 ANG. ± ½ °	SCALE: NONE	DRAWN BY: MTB	DATE: 12/4/06
	DRAWING #: SP1A	APPROVED BY: SPO	REVISION: A



75MF File #: E253669