

Patterson Baum & Associates Inc

320 Island way #304, Clearwater, Florida 33767

Garland Patterson (813) 293-1506 Fax (813) 933-5525

Carl Baum (727) 798-5564 Fax (727) 298-0507

October 31, 2001

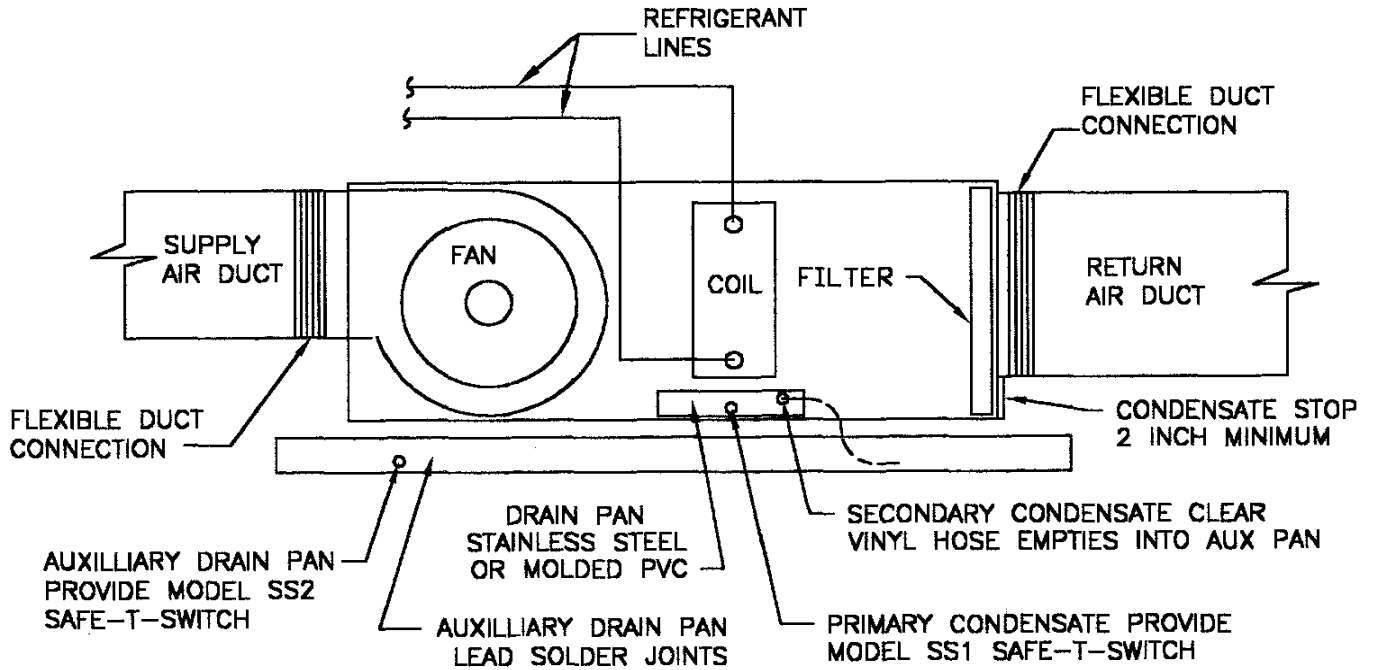
SMD Research, Inc
9836B Sandalfoot Blvd
Boca Raton, FL 33428

Re: Condensate Detail Drawings

Mark,

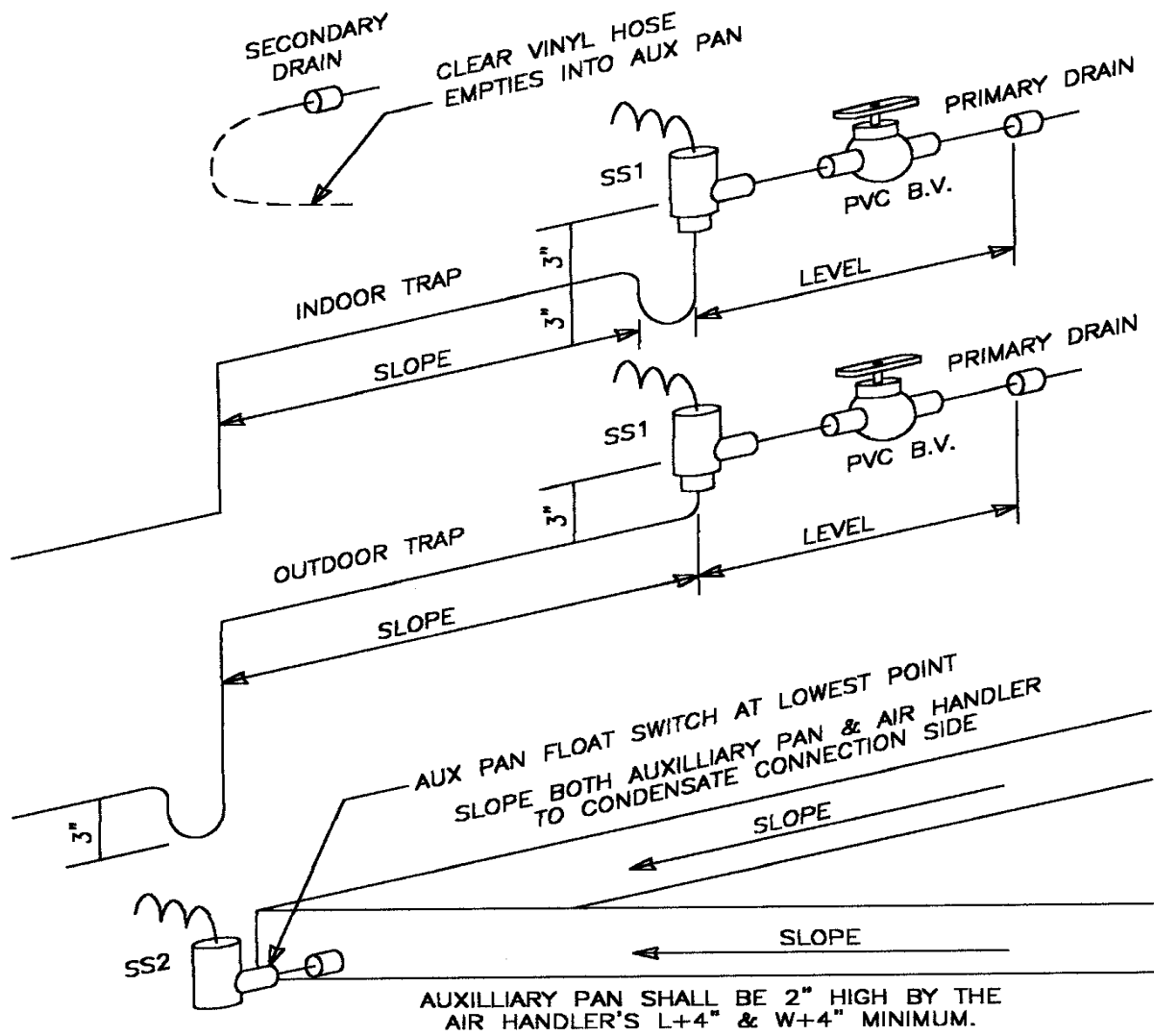
You sent me a sample of your SS-1 and SS-2 safety switches recently. So I thought you might like to see the detail drawings we will be using. The switch is a really fine idea.

Sincerely,
Garland Patterson Jr PE



HORIZONTAL AIR HANDLER DETAIL

NOT TO SCALE



SS1 IS OPENED FOR SERVICE ACCESS IE FLUSHING THE PRIMARY CONDENSATE LINE, ADDING ALGAECIDE, ETC. THE PVC BALL VALVE IS CLOSED WHEN FLUSHING THE PRIMARY CONDENSATE LINE. THE CLEAR VINYL HOSE IS USED TO POUR LIQUID ALGAECIDE INTO THE PRIMARY DRAIN PAN, ETC. THE LEVEL SECTION OF THE CONDENSATE LINE IS 12 INCHES MAXIMUM LENGTH. THE SLOPE OF THE CONDENSATE LINE AND AUXILLIARY PAN IS 1/4 INCH PER FOOT MINIMUM. WIRE SS1 AND SS2 IN SERIES WITH TERMINAL (Y) TO DISABLE COOLING ONLY. DO NOT DISABLE THE INDOOR FAN MOTOR.